

ATTACHMENT B

ATTACHMENT B

DEVELOPED SCOPE PRESENTATION

Perry Park Multipurpose Recreation Centre

Corner Bourke Road and Maddox Street
Alexandria

Scope Summary
May 2014

Resolution of Council – 9.12.13

Council resolved that:

- a) Council endorses the project scope for works described as Option A in the subject report for the purpose of design development, and that a further report be brought back to Council for approval of the developed scope before a Development Application is lodged

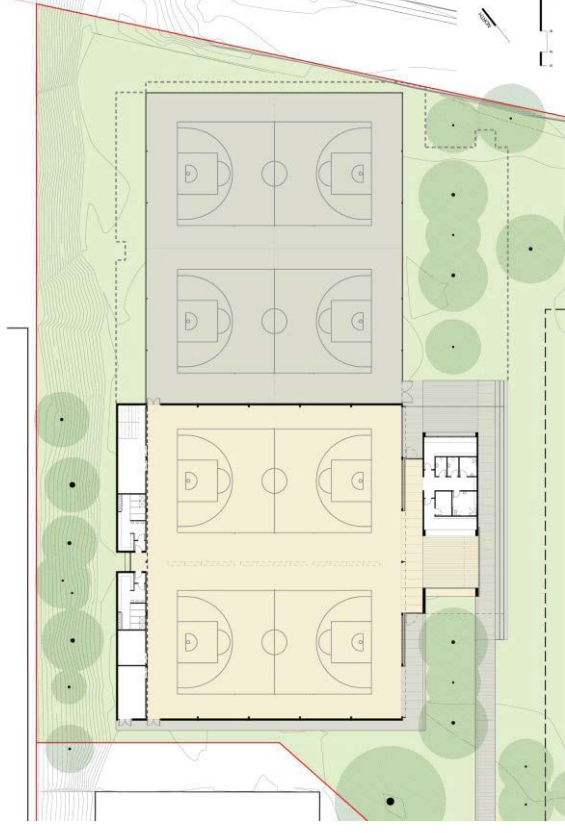
Option A (**Stage 1**) – A new, separate building behind the existing stadium, with two practice courts (without an event court) with foundations and slab for future expansion as a four court centre as in Option C.

Option C (**Stage 2**) – Four practice court centre with space for event court.

Developed Concept

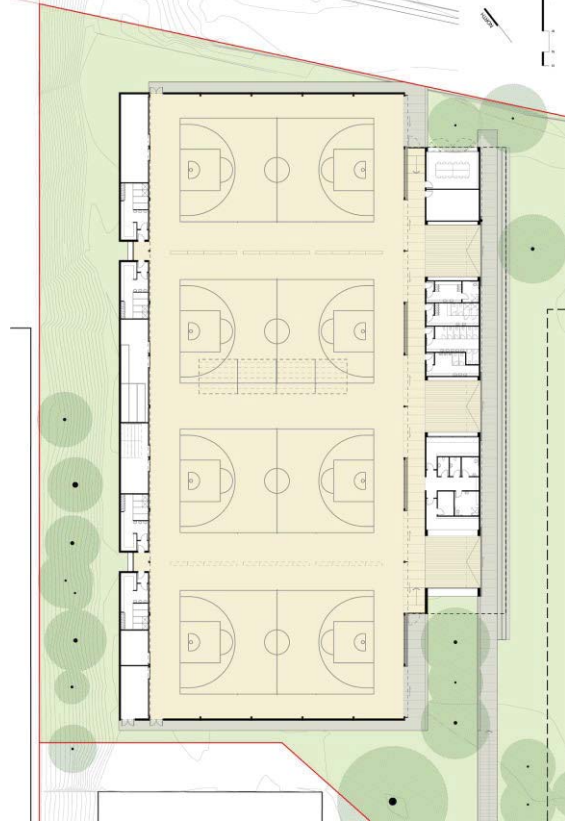
Stage 1:

- Two indoor multipurpose practice courts
- Change rooms and amenities for two courts
- Entry and staff area
- Store, plant and circulation



Stage 2:

- Additional two indoor multipurpose practice courts with space for an event court
- Change rooms and amenities for additional two courts
- Kiosk and merchandising areas
- Referee change rooms
- Staff change rooms
- Staff meeting room



Developed Concept

Stages 1 and 2

Building:

- Basic accommodation
- Retain existing basketball facility building
- Flexible centre operation
- Plan to allow for future development

Field:

- Space allocation only for a future multipurpose playing field, spectator viewing and amenities

Park:

- Plan to allow for future park improvements
- Space allocation for minimum parking

Developed Concept

Stages 1 and 2

Basic Structure and Materials :

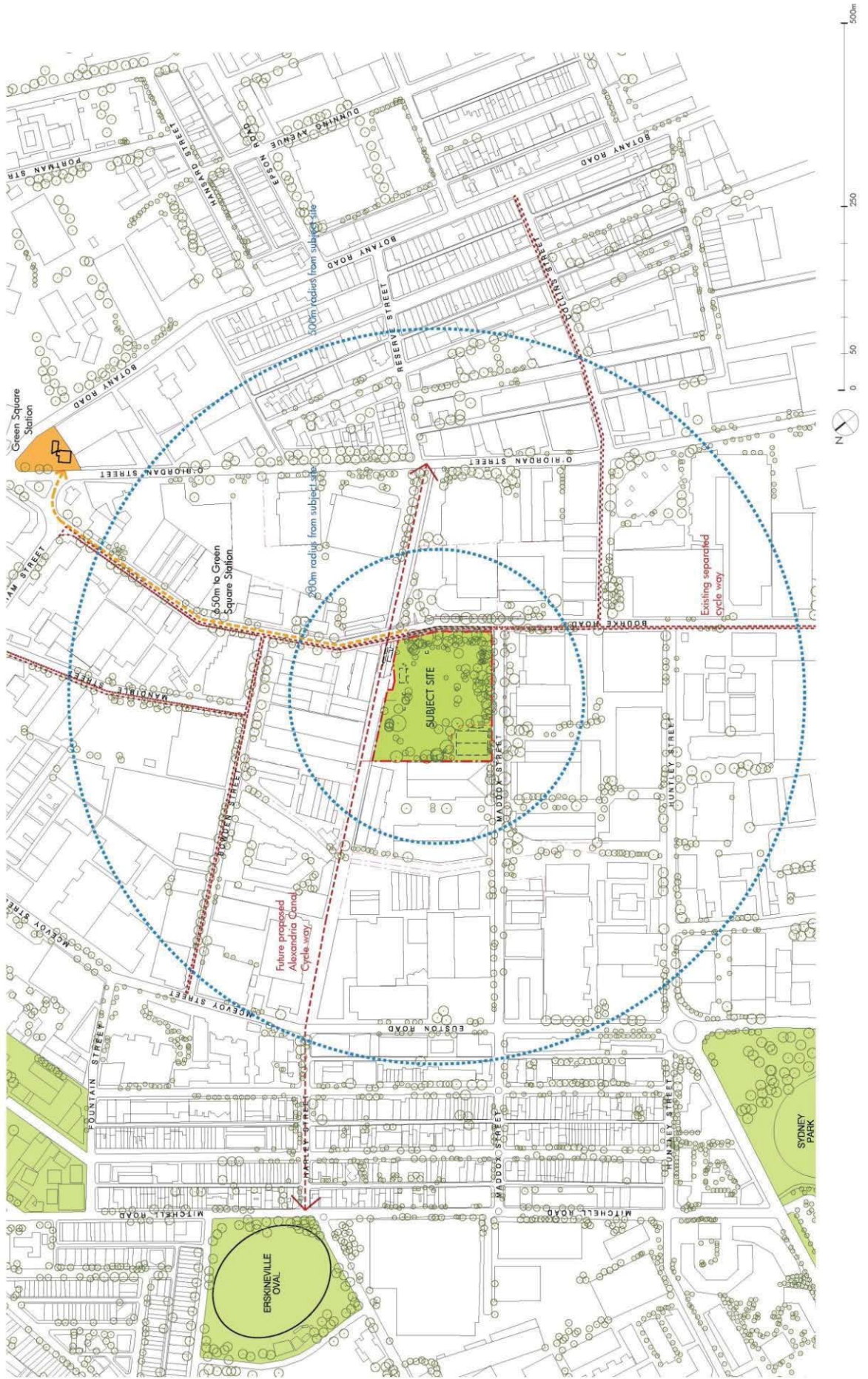
- Steel truss portal frame with paint finish
- Concrete block walls, external painted render and impact resistant FC lining
- Metal external wall and roof cladding
- Timber beams
- Aluminium framed, fixed glazed windows
- Aluminium framed, operable timber louvres
- Perforated sliding doors to entry
- Timber sliding doors to courts
- No ceiling
- Sprung timber floor

ESD Initiatives:

- Storm water capture and reuse
- Passive building ventilation
- Sustainable materials selection
- Maximise use of daylight and energy efficient lighting
- Separate project investigating viability of photovoltaic panels on roof

ATTACHMENT B

Site Alexandria

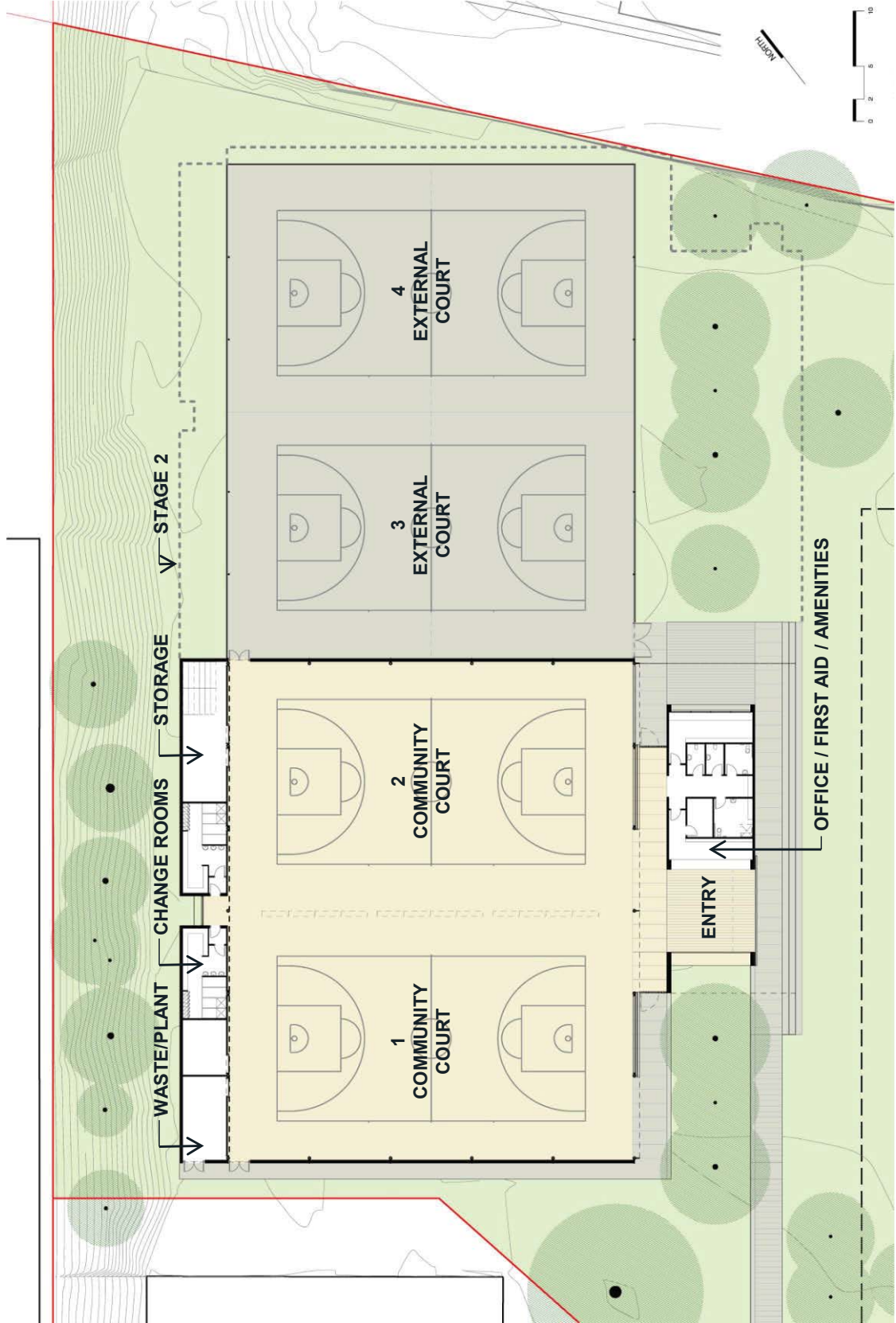


2012
Draft Development Application

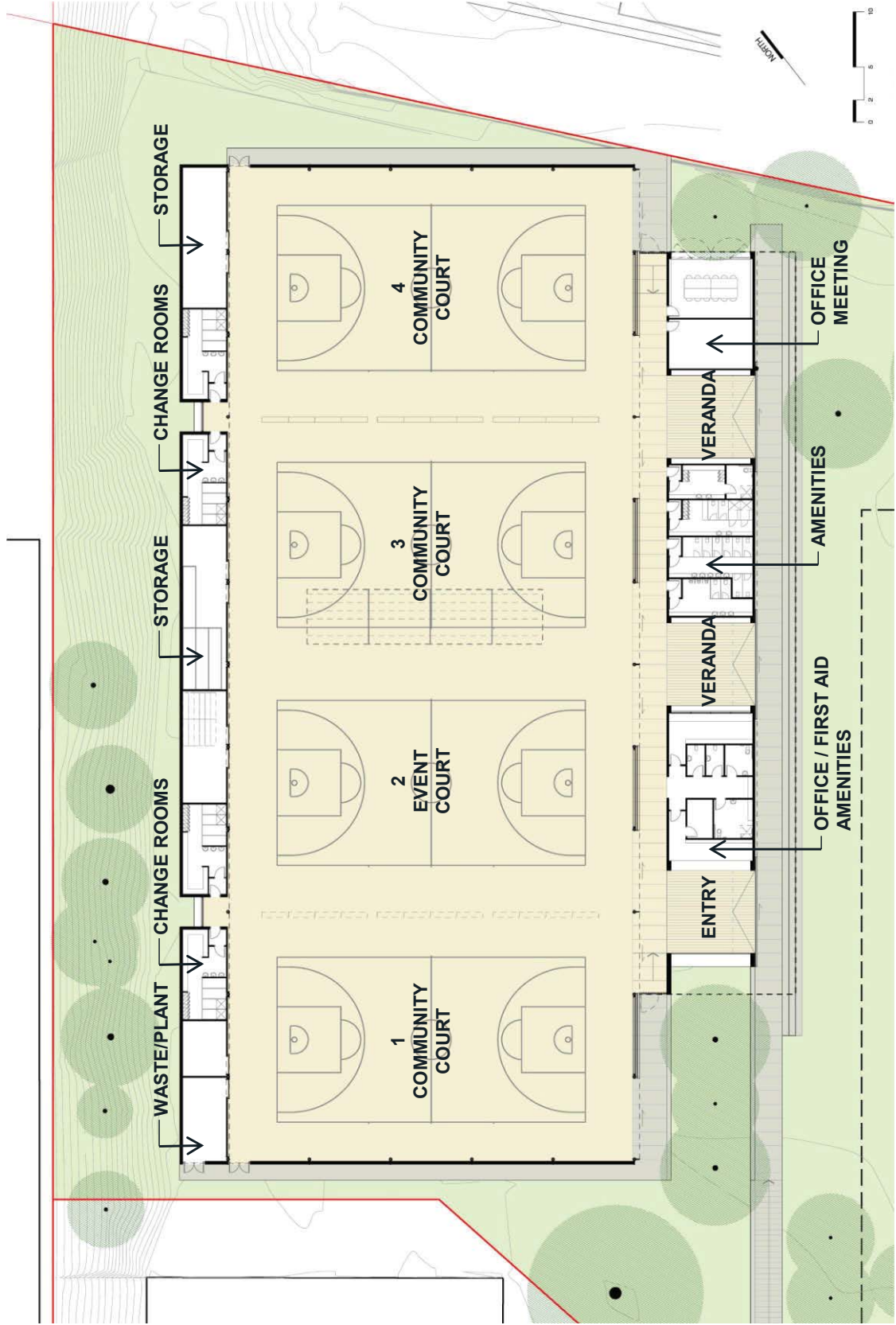




Stage 1 Ground Floor Plan

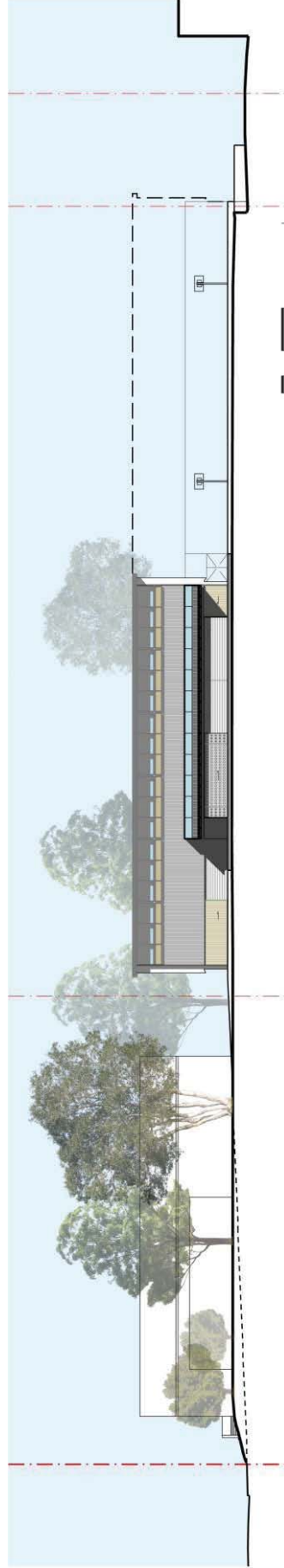


Stage 2 Ground Floor Plan

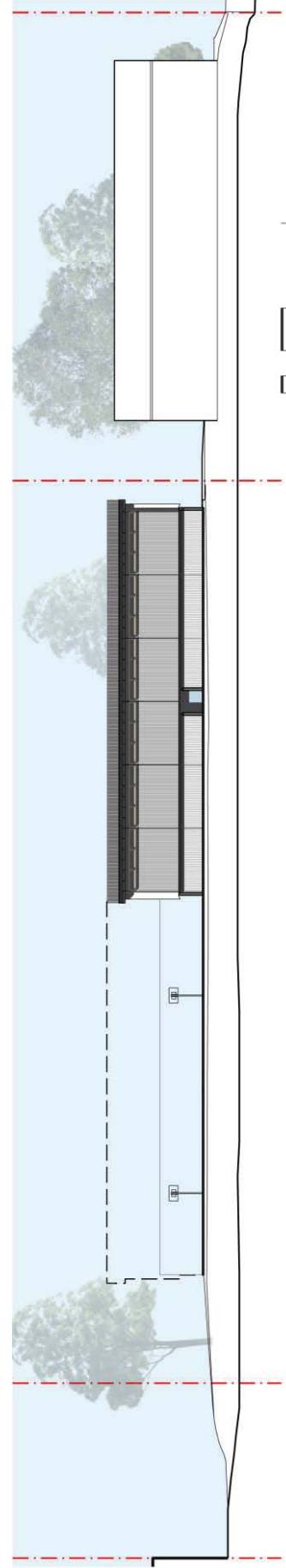


Stage 1 Elevations

ATTACHMENT B



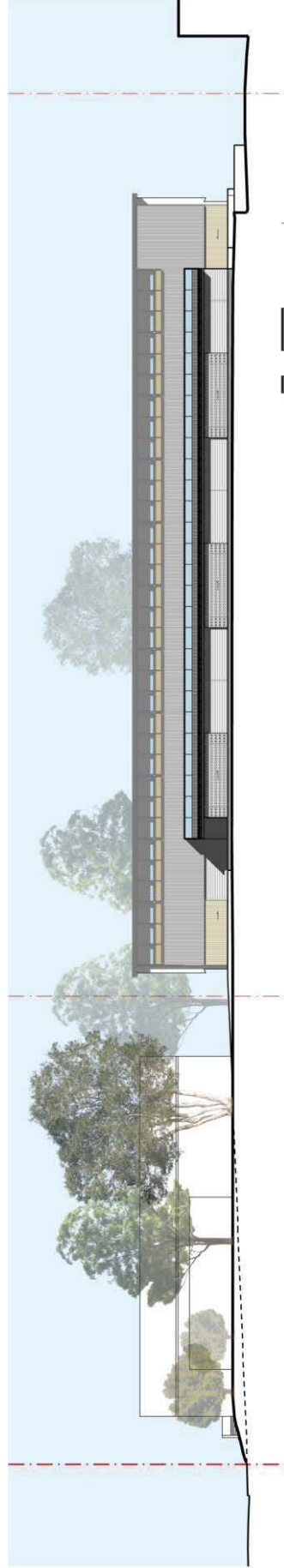
South-East Elevation



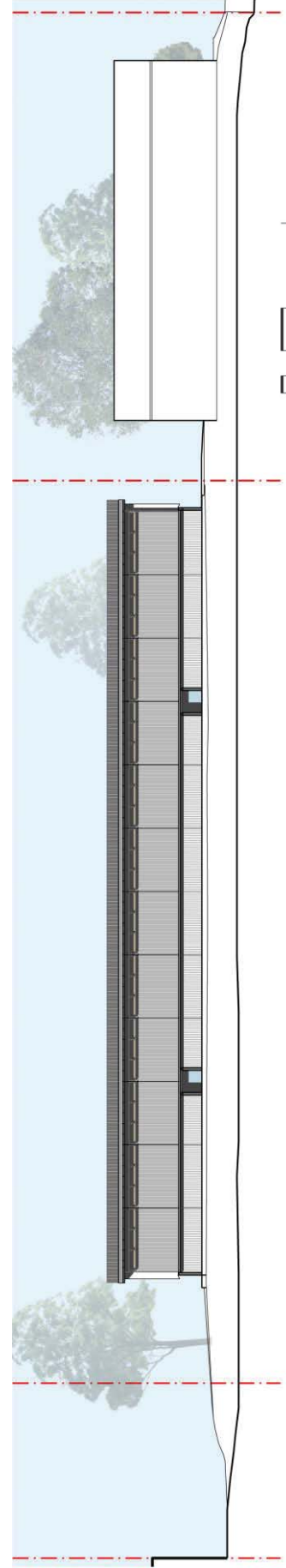
North-West Elevation

Stage 2 Elevations

ATTACHMENT B



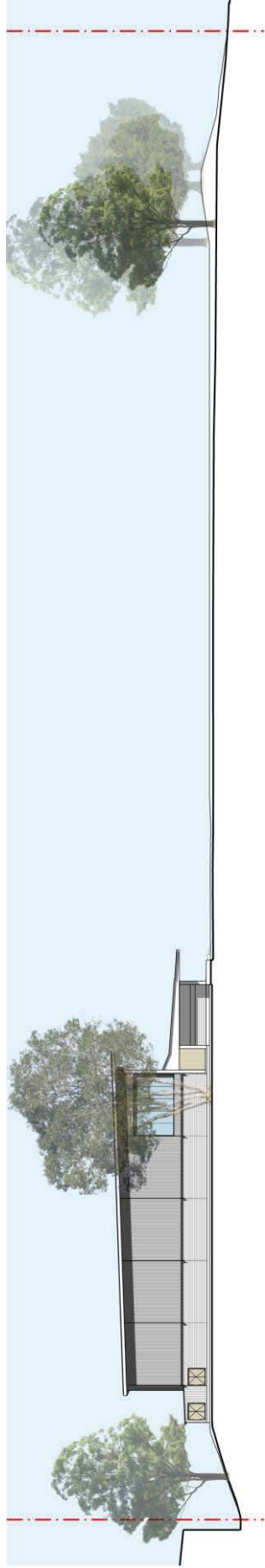
South-East Elevation



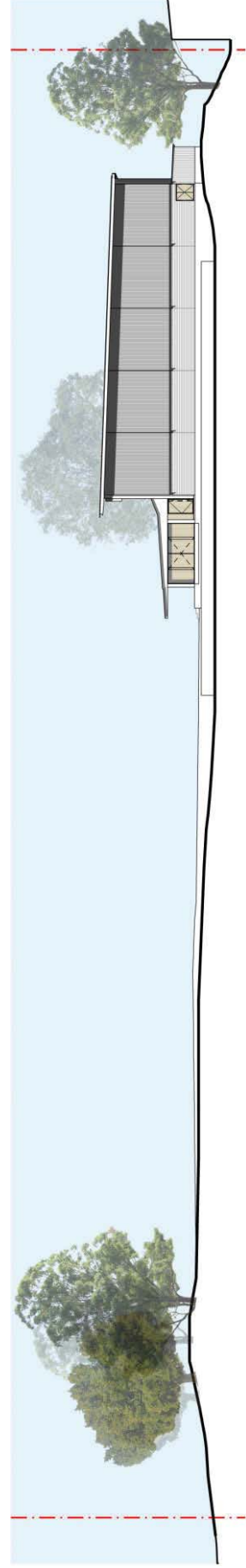
North-West Elevation

Stage 2 Elevations

ATTACHMENT B



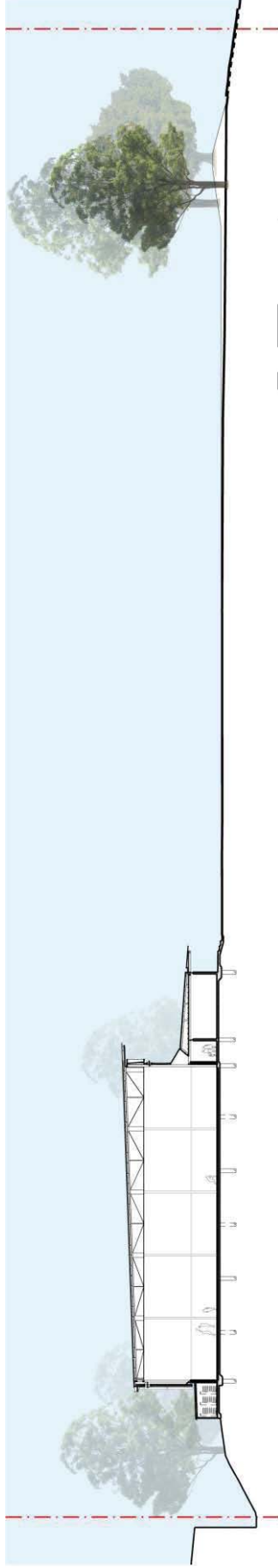
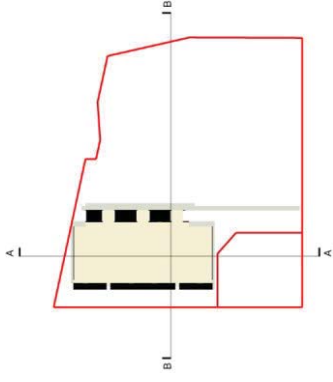
South-West Elevation



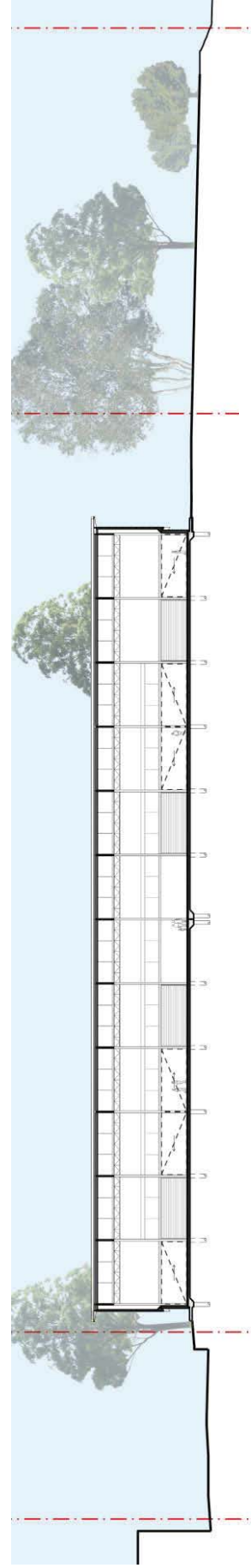
North-East Elevation

Stage 2 Sections

ATTACHMENT B



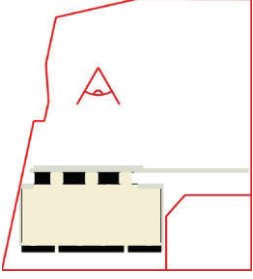
Long Section A-A



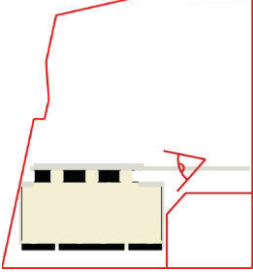
Cross Section B-B

Stage 2 Approach from Park

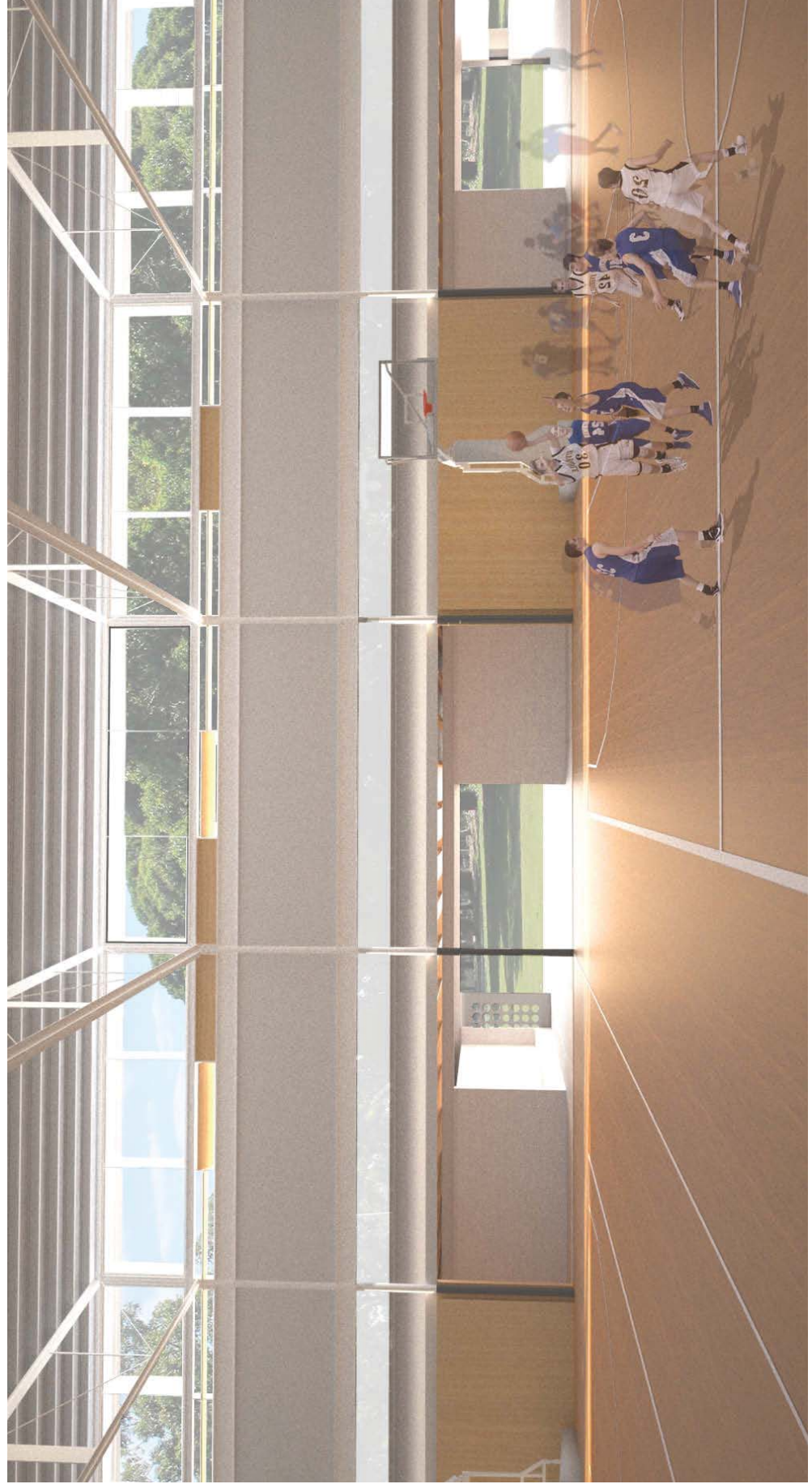
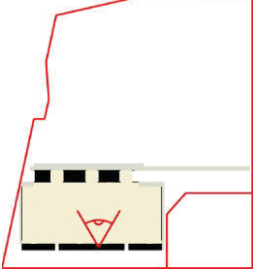
ATTACHMENT B



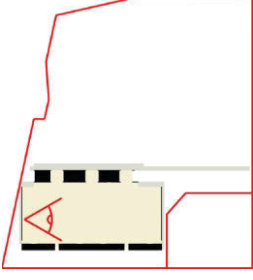
Stage 2 Approach from Maddox Street



Stage 2 Hall Looking South East



Stage 2 Hall Looking South-West



Stage 2 Hall Looking South-West - with ceiling (not in budget)

